

# 8

*Welcome to*

# FRIVICK CRT

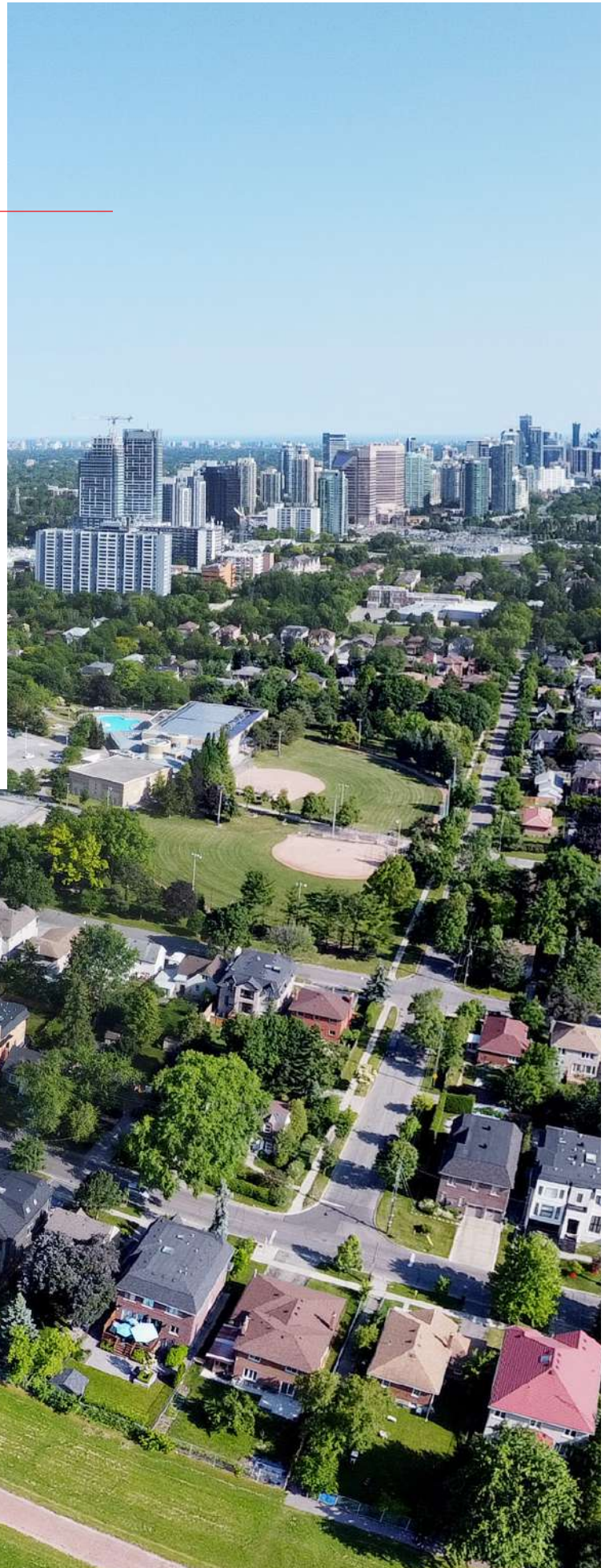


GOOD AGENT

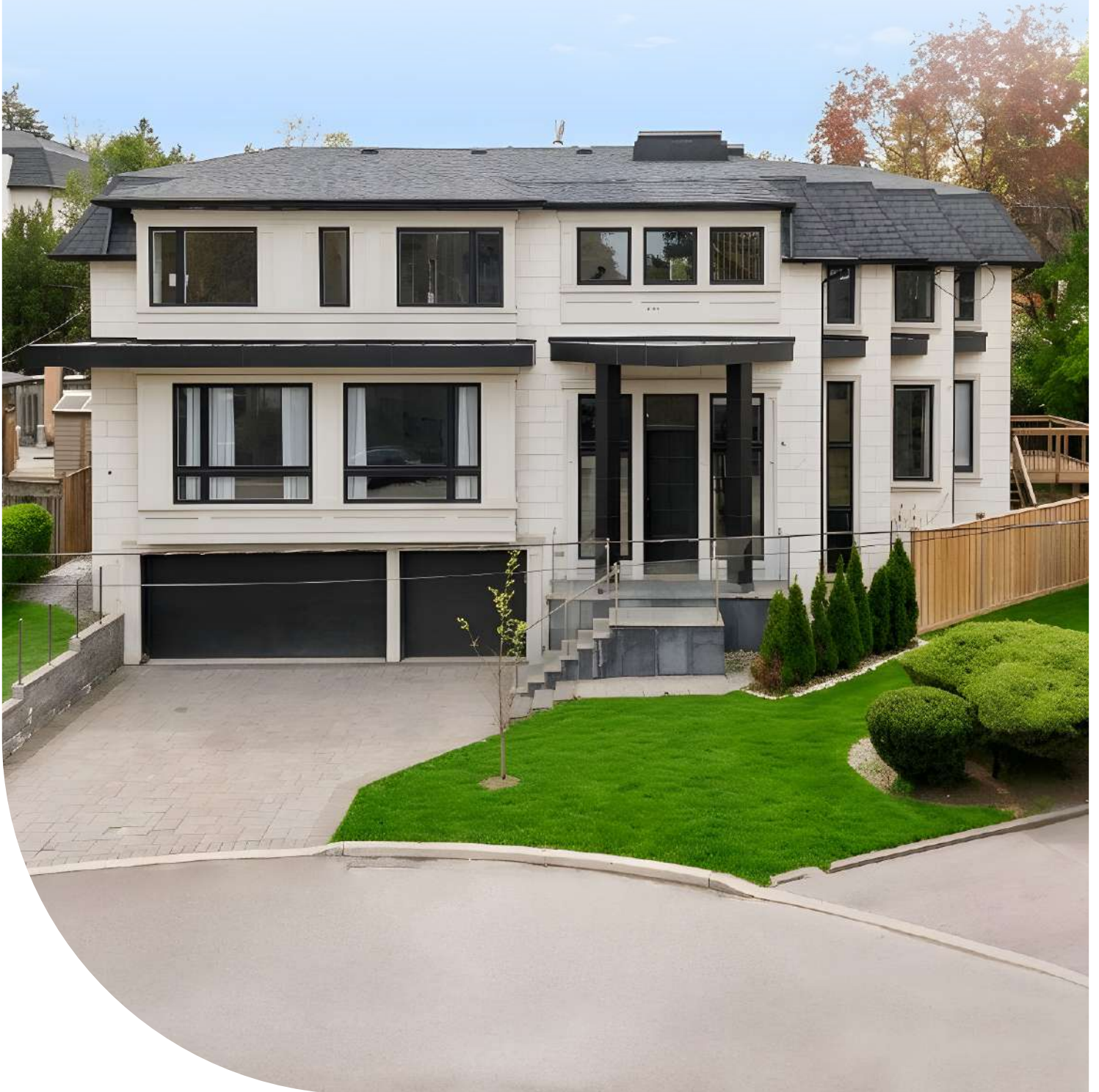
A stunning custom contemporary estate tucked into a quiet cul-de-sac in Newtonbrook East. Limestone elevation, 6-inch oak hardwood floors, natural stone throughout, and an 8-piece spa ensuite that redefines the primary suite. Three-car garage with EV charger, private elevator, and a finished walk-out basement - every detail considered, nothing overlooked.

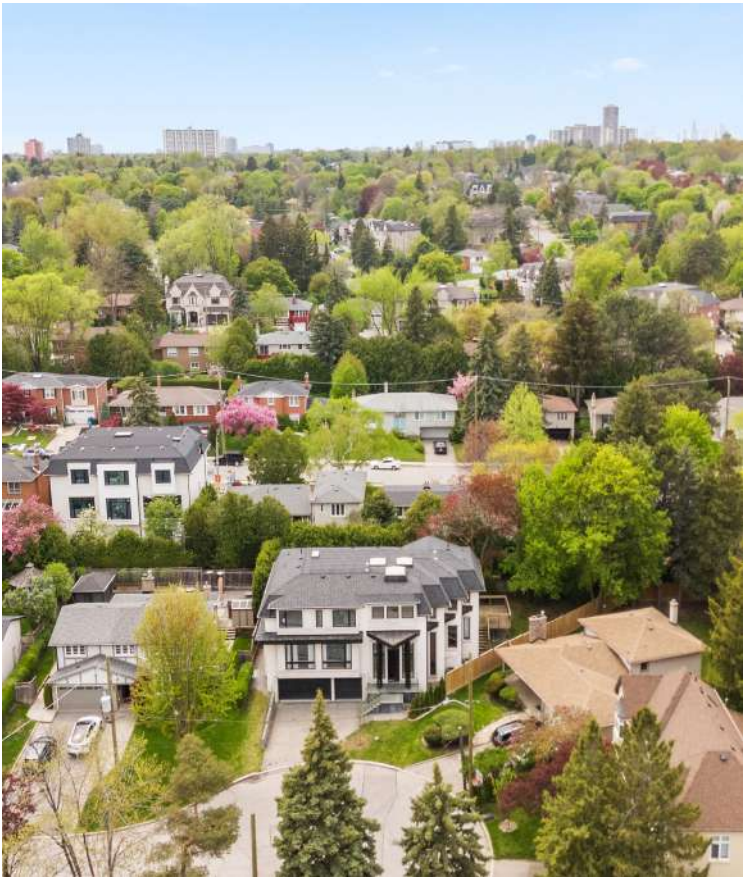
# NEWTONBROOK NEIGHBORHOOD

Newtonbrook is an established northern Toronto neighborhood nestled between the scenic branches of the Don River Valley. Dating back to the 1800s, this area combines rich heritage with modern living through diverse housing options from mid-century homes to new condominiums. Residents enjoy abundant green spaces with twenty neighborhood parks, excellent recreational facilities, and convenient shopping at CentrePoint Mall and along vibrant commercial corridors. With superior transportation connections and proximity to educational institutions like Tyndale University, Newtonbrook offers the perfect balance of historical character, family-friendly amenities, and urban accessibility in a welcoming community atmosphere.



WHERE EVERY GATHERING  
FEELS EFFORTLESS



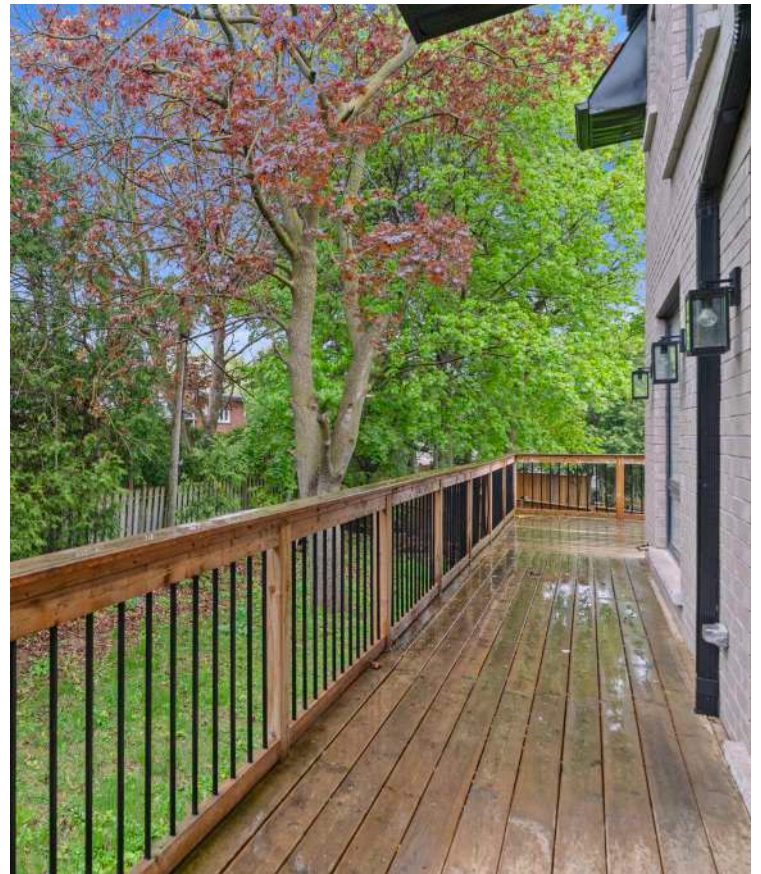


A magnificent custom-built contemporary home on a wide pie-shaped lot in the heart of Bayview and Steeles. Limestone facade, over 4,000 sq. ft. of refined living space spread across two stories, private elevator, and a chef's kitchen anchored by Wolf and Sub-Zero appliances. Master retreat with an 8-piece spa ensuite, 6-inch oak hardwood floors, and natural stone throughout. A finished walk-out basement, 3-car garage, and a serene cul-de-sac setting - every detail considered, nothing overlooked.

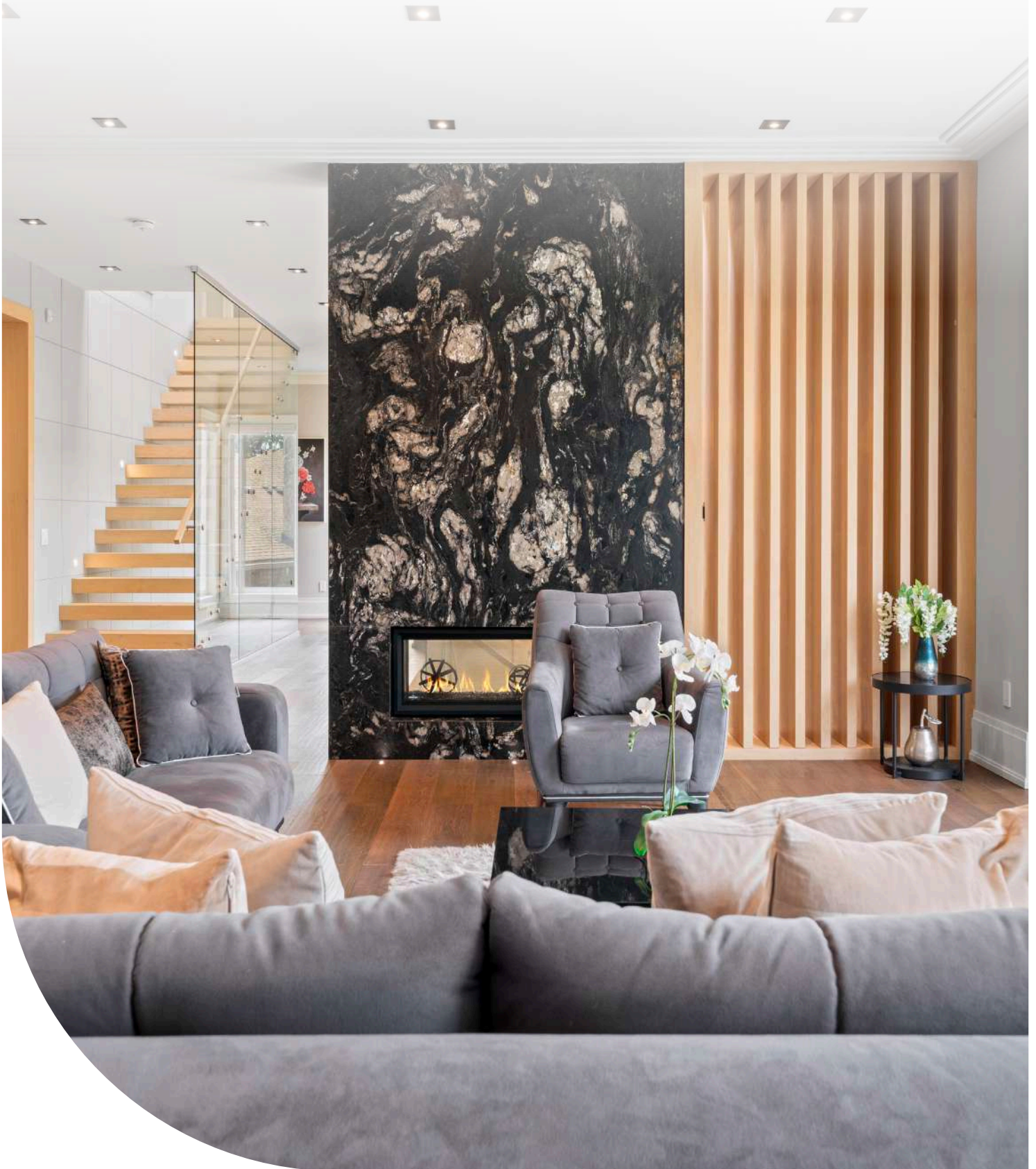
## EXCEPTIONAL FLEXIBILITY ELEVATED LUXURY

### OVERVIEW:

- Serene Cul-de-Sac Location
- Over 4,000 Sq. Ft. of Living Space
- Lot Size: 41 x 124 Ft
- 4+2 Bed & 6 Bath
- 3-Car Garage with EV Charger
- Private Elevator
- Natural Stone Throughout
- 6" Oak Hardwood Floors
- Elfa Custom Closet Systems
- Smart Home Readiness
- Finished Walk-Out Basement



# THIS IS WHAT CUSTOM REALLY MEANS



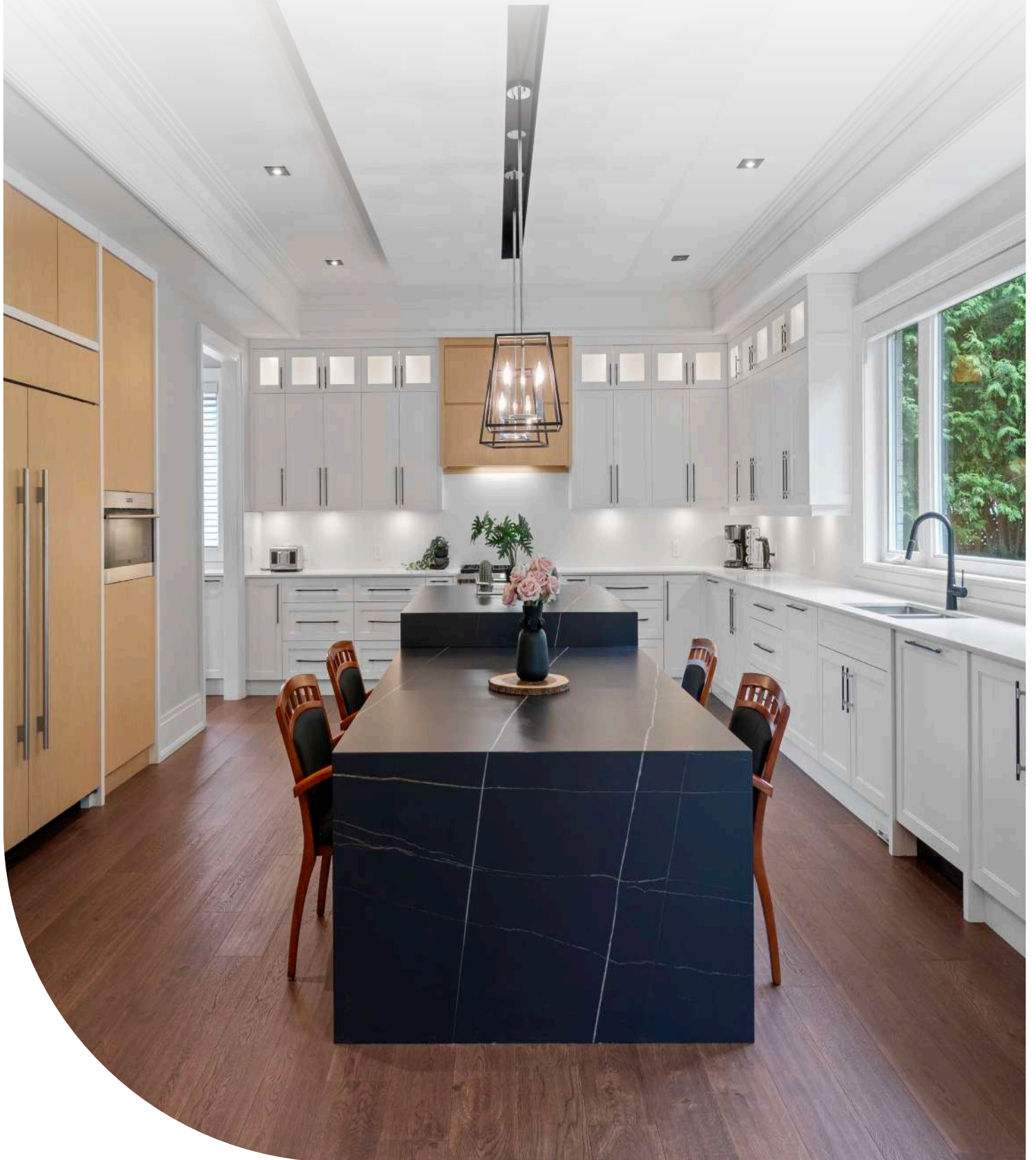


## LIVING ROOM & DINING AREA

Marble from floor to ceiling, a gas fireplace built into the wall, and oak floors that run through the whole space. The kind of room that looks great, empty and even better full of people.

- Floor-to-Ceiling Marble & Gas Fireplace
- 6" Oak Hardwood Floors
- Open-Concept Flow to Kitchen
- Panelled Slab Wall Detail
- Soaring Ceilings with Designer Lighting
- Custom Chandelier

# TIMELESS LUXURY, MODERN DESIGN





## KITCHEN

---

Wolf and Sub-Zero at your service. An oversized island anchors the space, slab-paneled walls frame it, and everything is built to make cooking feel less like a task and more like the best part of the day.

- Wolf Gas Stove, Oven & Microwave
- Sub-Zero Refrigeration
- Asko Dishwasher
- Oversized Island with Seating
- Premium Slab-Paneled Walls
- Open to Dining Area

WHERE EVERY DETAIL  
WAS DECIDED TWICE



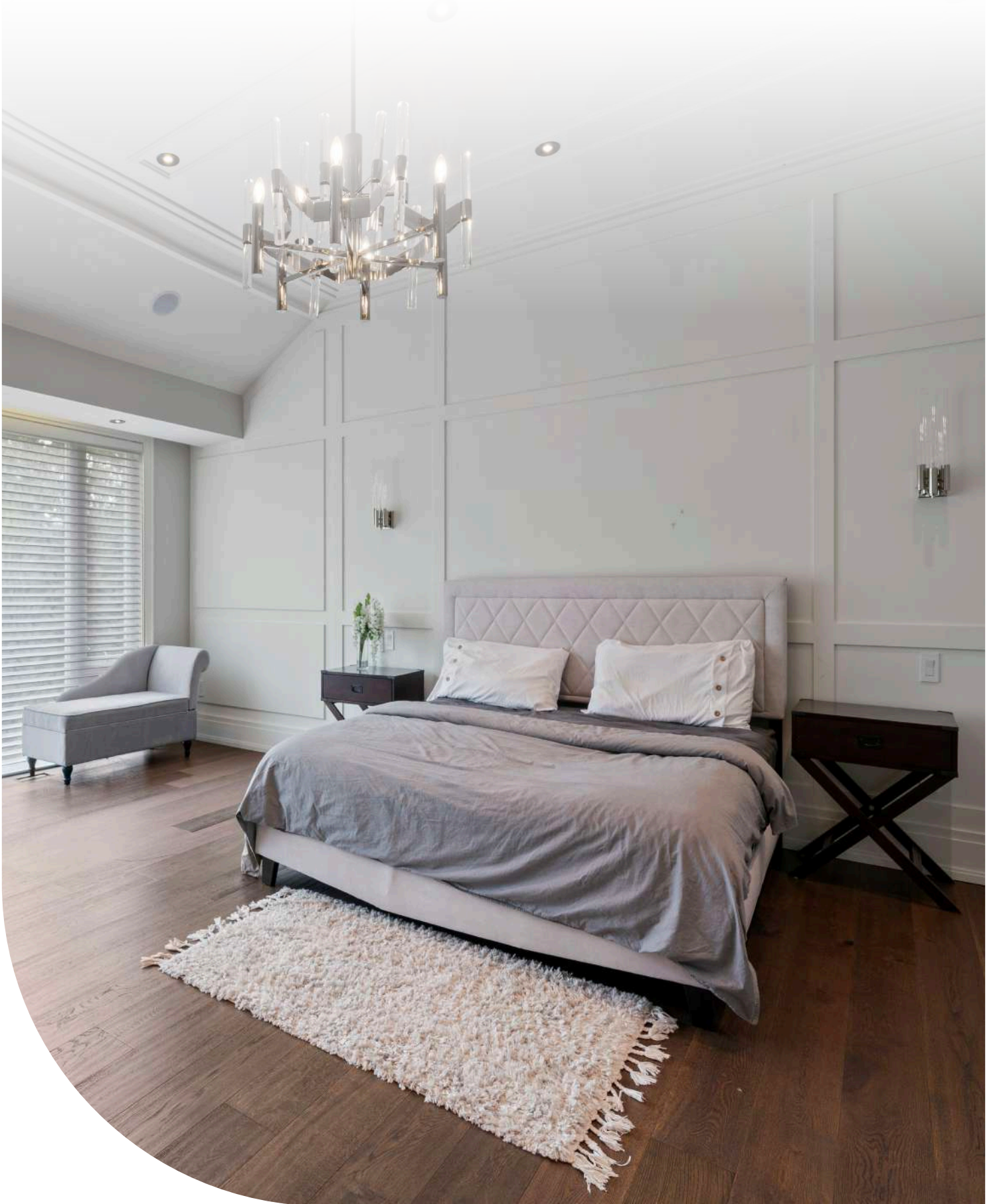


## FAMILY ROOM

The vibrant hub for connection, where gatherings spark by the fireplace and daylight dances through expansive windows. Designed for both lively game nights and serene morning coffees and views of your private backyard.

- Floor To ceiling windows
- Over Looking Backyard
- Versatile Space For Relaxation
- Soaring Ceilings Amplifying Light And Space

EVERY ROOM HAS A STORY



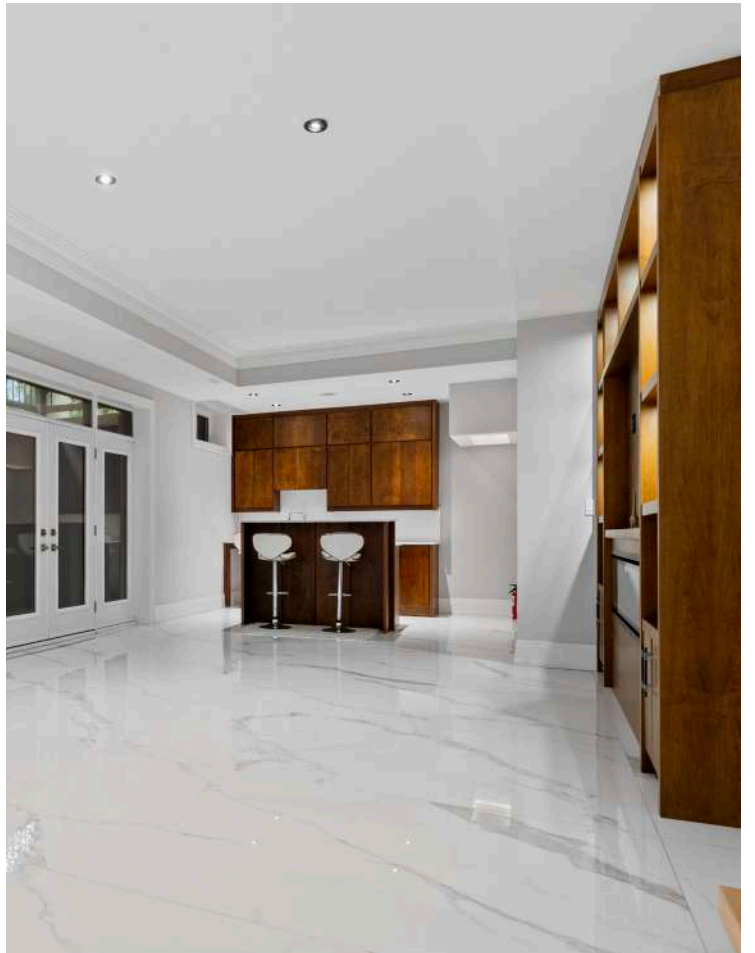
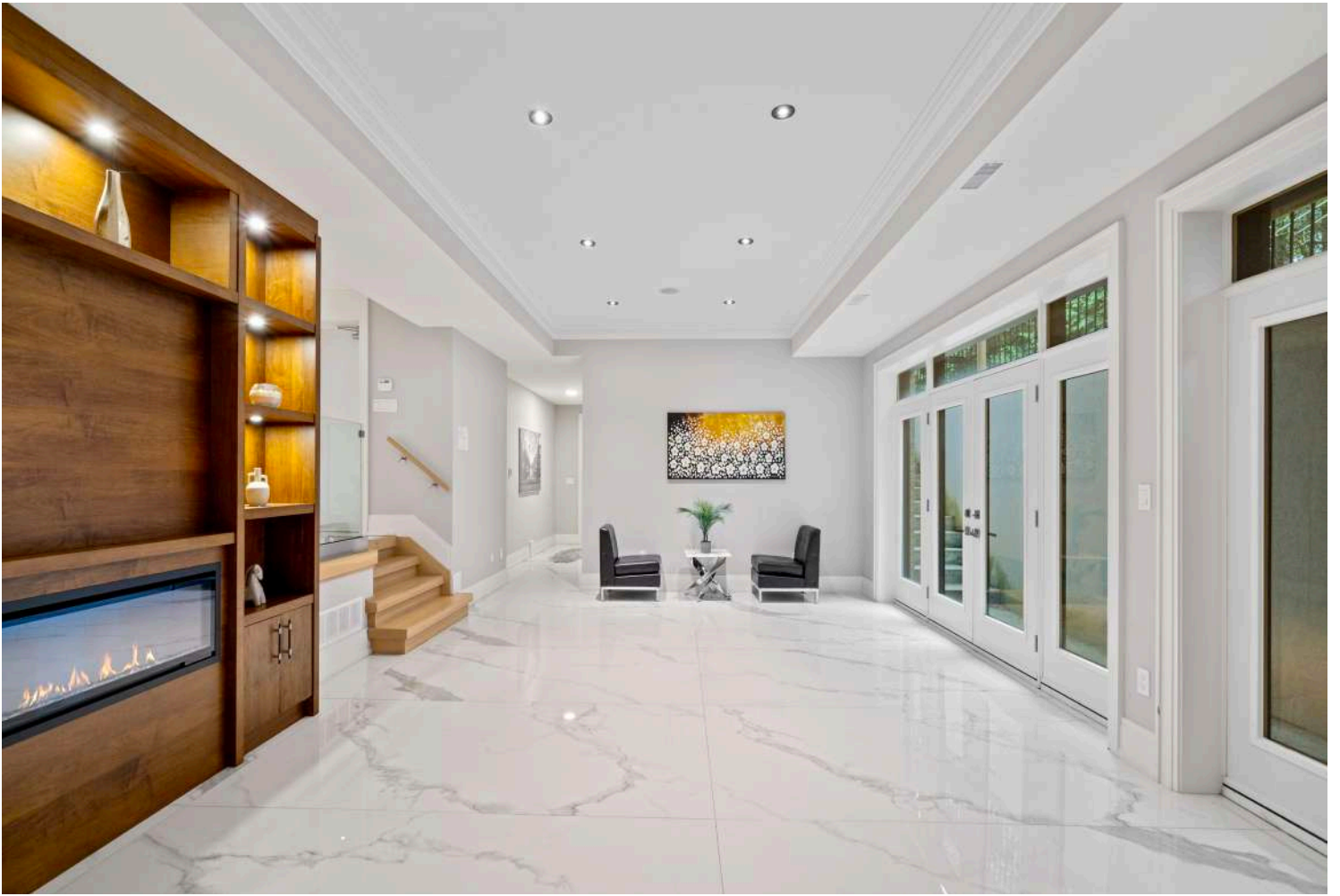


## PRIMARY SUITE

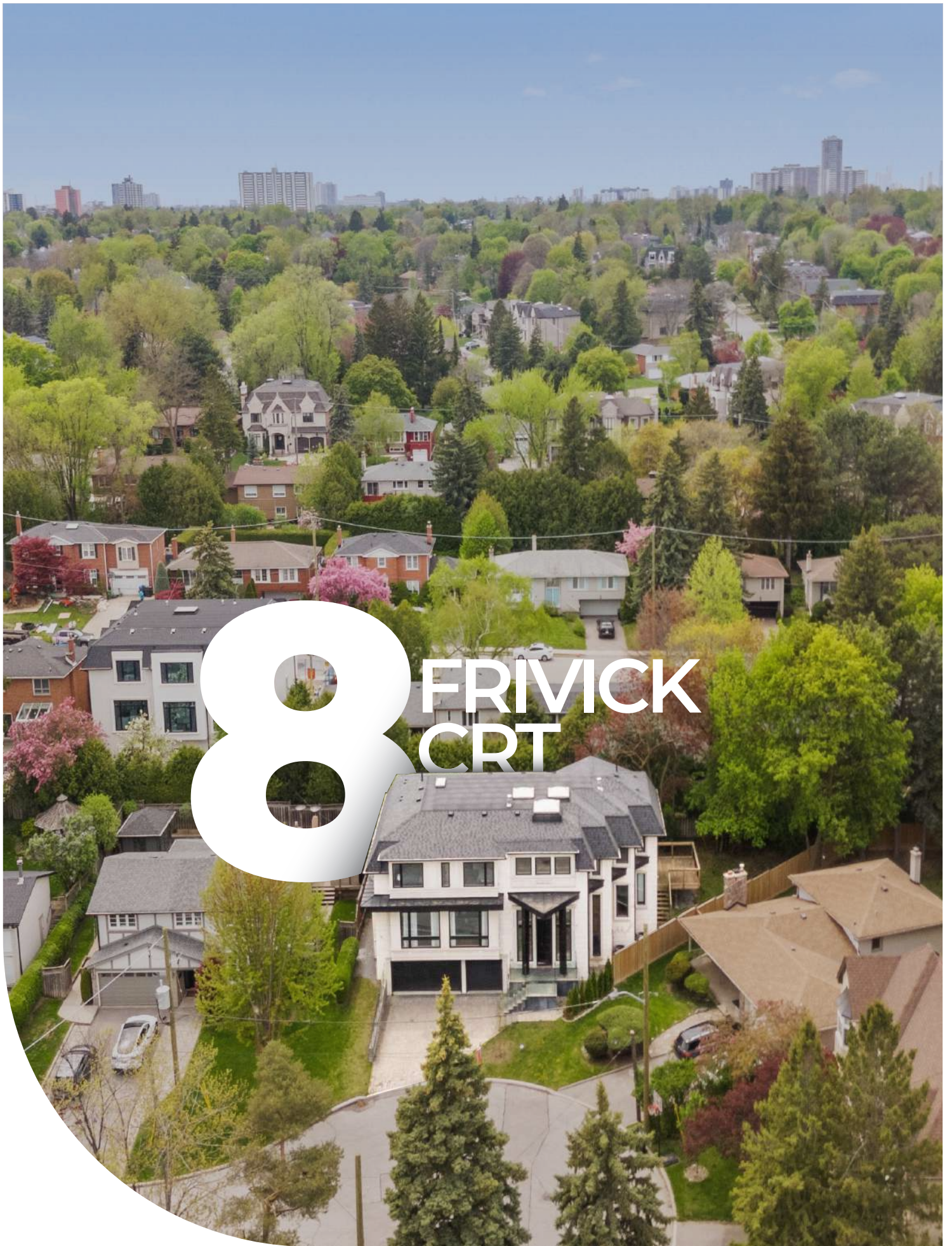
---

Close the door. The rest of the house disappears. A spa-inspired 8-piece ensuite, a custom Elfa walk-in closet, and enough space to make mornings feel unhurried

- Spa-Like 8-Piece Ensuite
- Soaking Tub & Rain Shower
- Walk-In Closet with Elfa Custom System
- Luxury Tile & Fixtures
- Serene & Private Layout







# 8 FRIVICK CRT

*Good* Delivering What Matters!  
*Agent..!*

8 FRIVICK CRT

*Schedule a viewing today!*

Presented by:

**Kristian Utley**  
Sales Representative  
437.448.0180

**Merad Safaian**  
Real Estate Broker  
416.837.0311

**Al Mousavi**  
Sales Representative  
437.688.6887



416.847.5288  
WWW.MERADSAFAIAN.COM  
31 Scarsdale Rd, Unit 6, Toronto

